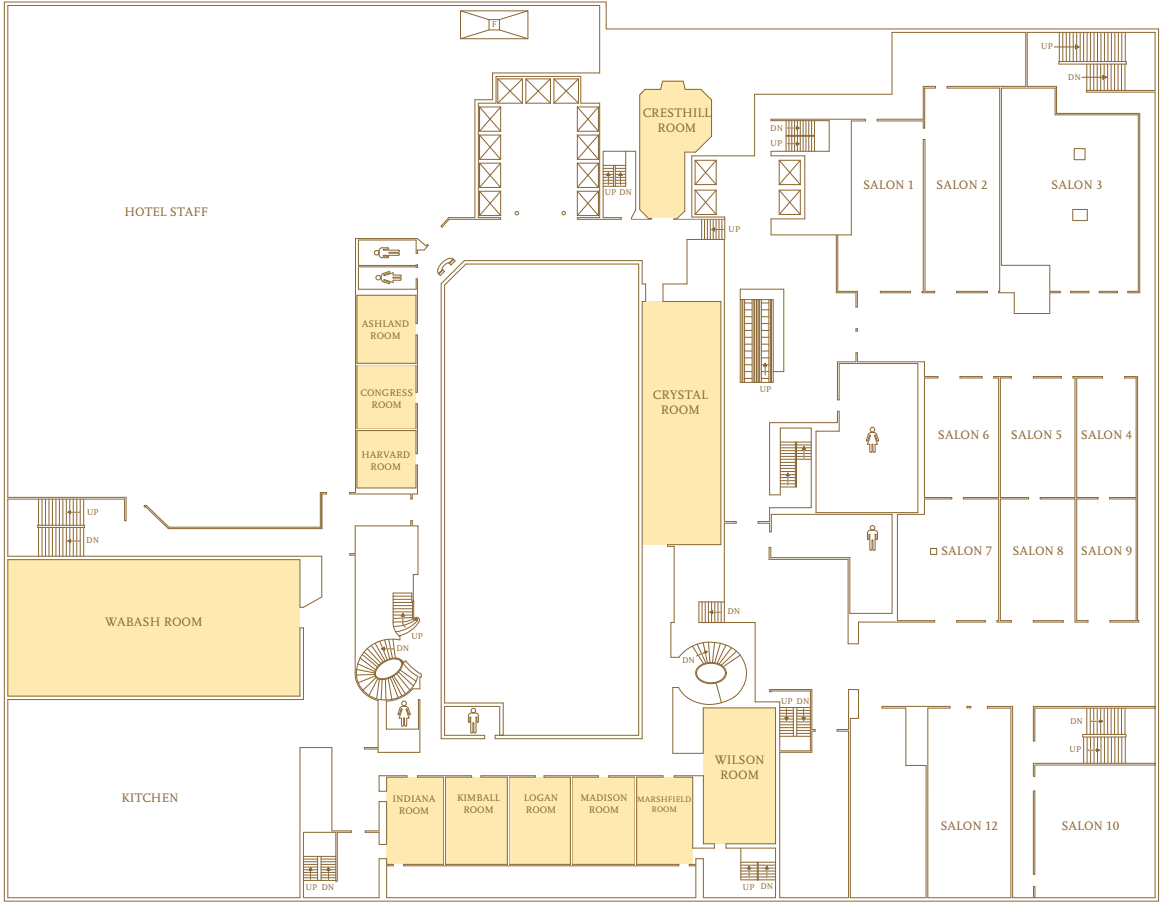


THIRD floor

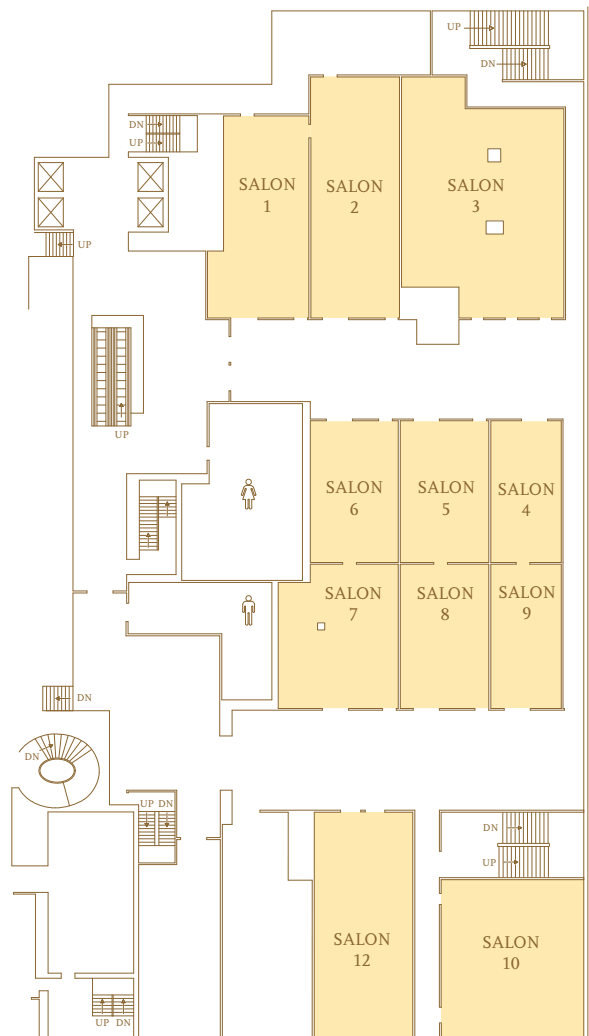


Third Floor	Dimensions (l x w)	Square Feet ◊	Ceiling Height	Theater	Schoolroom 2/6'	Schoolroom 3/6'	Banquet	Reception •	Conference
Ashland Room	17' x 20'	331'	9'	30	12	18	20	25	12
Congress Room	17' x 16'	230'	9'	24	10	15	20	25	12
Harvard Room	17' x 15'	259'	9'	24	10	15	20	25	12
Indiana Room	35' x 16'	520'	10'	50	20	30	40	64	24
Kimball Room	35' x 16'	560'	10'	50	20	30	50	64	24
Logan Room	35' x 16'	560'	9'	50	20	30	50	64	24
Madison Room	31' x 16'	474'	10'	50	20	30	40	56	24
Marshfield Room	31' x 16'	527'	10'	50	20	30	40	64	24
Wilson Room	23' x 37'	737'	9'	75	28	42	50	83	30
Cresthill Room	37' x 22'	621'	9'	35	20	30	50	77	24
Crystal Room	72' x 22'	1,600'	9'	185	68	102	130	187	52
Wabash Room	65' x 40'	2,600'	9'	280	100	150	200	299	52

◊ Usable square footage
 • Capacities take into consideration placement of bars, cocktail rounds, food stations, and experience of hotel

THIRD

floor SALONS



Third Floor Salons

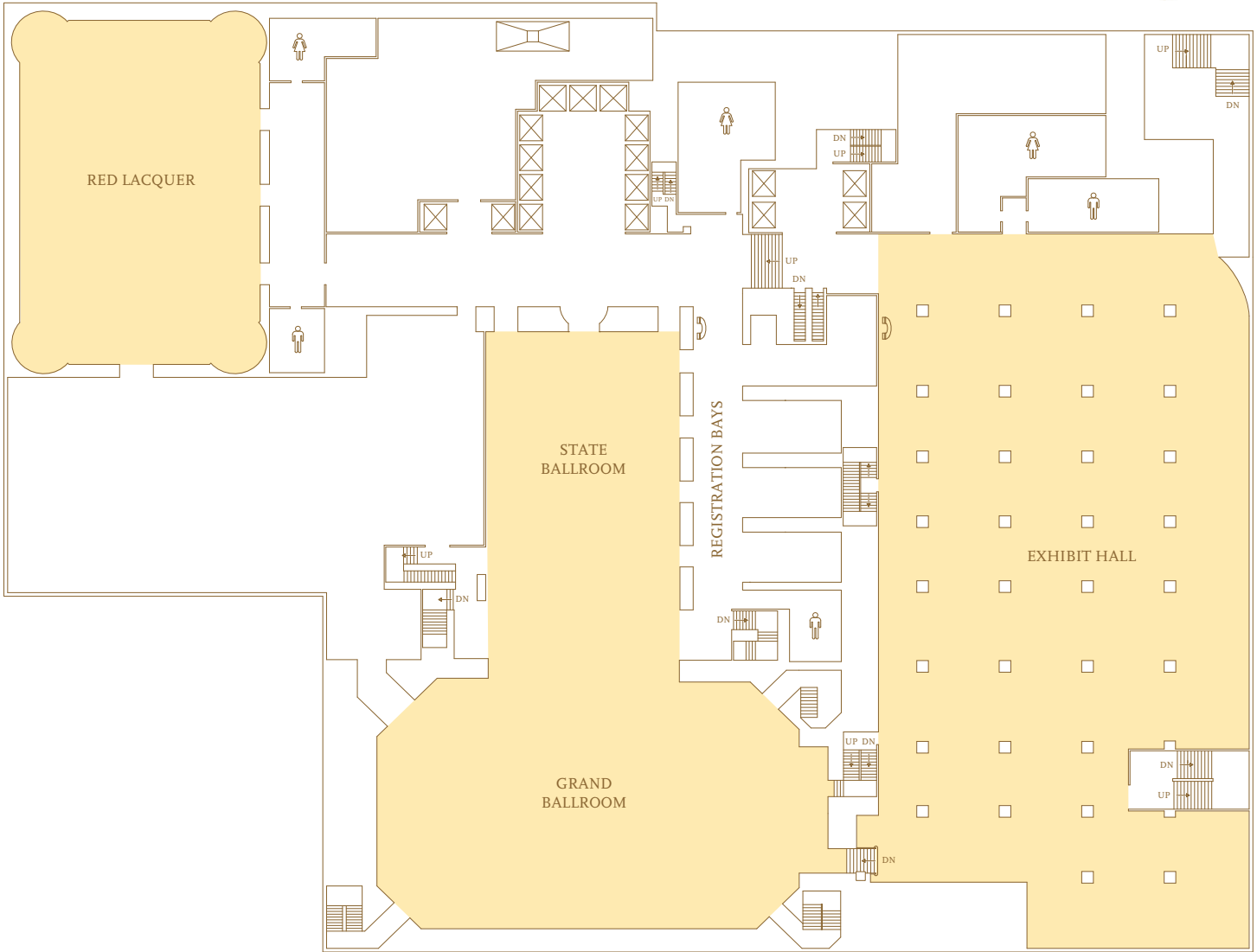
	Dimensions (L x W)	Square Feet ◊	Ceiling Height	Theater •	Schoolroom 2/6 •	Schoolroom 3/6 •	Banquet •	Reception •	Conference •	8' x 10' (W x L)	10' x 10' (W x L)
Total Square Footage	N.A.	17,500'	9'6"	N.A.	N.A.	N.A.	N.A.	N.A.	N.A.	40	30
Salon 1	50' x 24'	935'	9'6"	72	22	33	50	80	34	N.A.	N.A.
Salon 2	39' x 22'	832'	9'6"	94	36	54	70	104	36	N.A.	N.A.
Salon 3	41' x 38'	1,434'	9'6"	120	40	60	80	120	36	N.A.	N.A.
Salon 4	61' x 35'	663'	9'6"	45	20	30	40	80	24	N.A.	N.A.
Salon 5	61' x 35'	753'	9'6"	50	22	33	50	80	24	N.A.	N.A.
Salon 6	61' x 71'	706'	9'6"	66	22	33	50	80	24	N.A.	N.A.
Salon 7	34' x 71'	992'	9'6"	88	28	42	70	95	24	N.A.	N.A.
Salon 8	73' x 71'	761'	9'6"	45	20	30	40	80	24	N.A.	N.A.
Salon 9	73' x 71'	621'	9'6"	45	20	30	40	80	24	N.A.	N.A.
Salon 10	29' x 36'	1,029'	9'6"	60	24	46	60	98	24	N.A.	N.A.
Salon 12	20' x 52'	1,040'	9'6"	100	30	45	70	98	36	N.A.	N.A.

- ◊ Usable square footage
- Capacities are estimated based on square footage

The Salons are illuminated by fluorescent and dimmable incandescent lights.

Wired for high speed Internet connectivity.

FOURTH floor



Fourth Floor	Dimensions (l x w)	Square Feet ◊	Ceiling Height	Theater	Schoolroom 2/6'	Schoolroom 3/6'	Banquet	Reception •	Conference
Grand Ballroom	70' x 121'	9,248'	29'	1,000	400	600	800	1,119	N.A.
Ballroom Balcony	N.A.	2,266'	N.A.	120	30	45	80	126	N.A.
State Ballroom	73' x 47'	3,617'	29'	380	132	198	260	408	N.A.
Grand/State Ballroom	168' x 121'	12,865'	29'	1,500	500	750	1,200	1,653	N.A.
Red Lacquer	84' x 98'	7,133'	21'	500	240	360	450	688	N.A.
Exhibit Hall	114' x 199'	16,909'	9'2"	N.A.	N.A.	N.A.	N.A.	N.A.	N.A.

- ◊ Usable square footage
- Capacities take into consideration placement of bars, cocktail rounds, food stations, and experience of hotel